



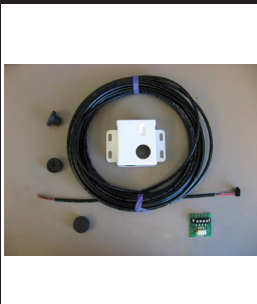
HAYWARD®

092214A RevC

GLX-RF-EXTEND

For Pro Logic®

Installation Instructions



Contents

Introduction.....	1
Installation.....	1

GLX-RF-EXTEND

Hayward Industries
400 Connell Drive, Suite 6100
Berkeley Heights, NJ 07922
Phone: (908) 355-7995
www.hayward.com



HAYWARD®

Introduction

The following instructions will explain how to install the 50 ft. base extension cable with mounting bracket for AQL2-BASE-RF.

WARNING: Remove power to the Pro Logic before removing the dead front. Failure to do so may result in serious injury or death.

Contents

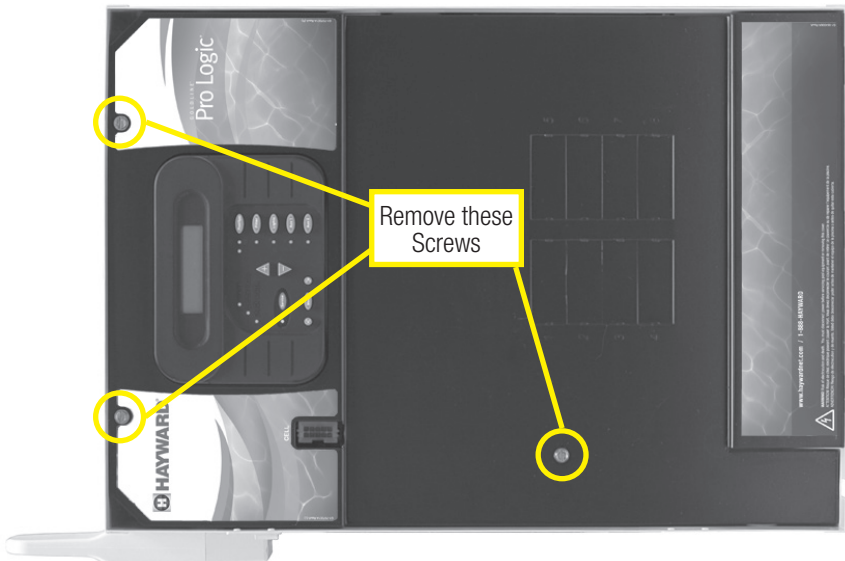
- (1) Remote Mount Bracket
- (1) PVC Plug
- (1) 50' Extension Cable
- (1) Seal Plug
- (1) RF Remote Circuit Board
- (1) Cable Bushing



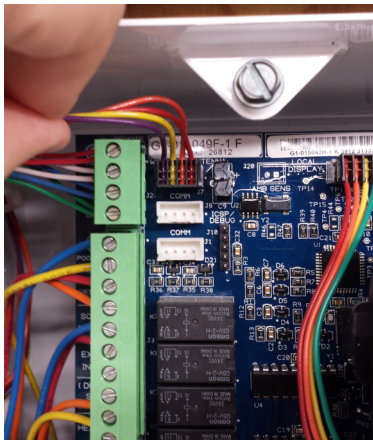
Installation

WARNING: Remove power to the Pro Logic before removing the dead front. Failure to do so may result in serious injury or death.

First you must remove the dead front Panel on the inside of the Pro Logic. The dead front is held on by 3 sheet metal screws and can be removed by a 5/16 nut driver or a standard flathead screwdriver



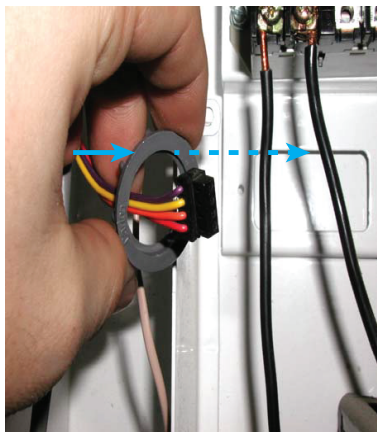
If you currently have the base unit installed with your unit, start from step 1, otherwise skip to step Six (6).



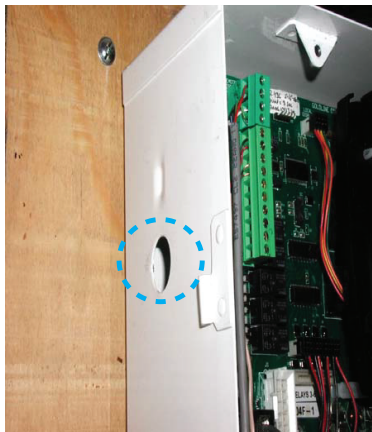
STEP 1: Remove the existing base cable.



STEP 2: Remove the locknut that holds the base in place.



STEP 3: Remove the locknut off of base cable.



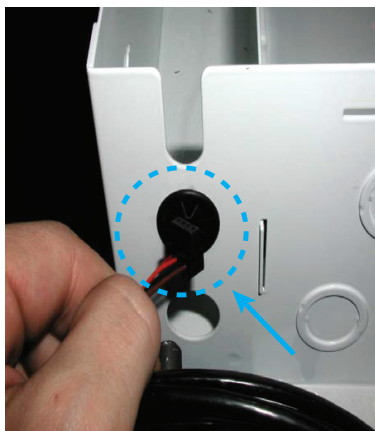
STEP 4: Remove the base from the Pro Logic and you should see a hole like this.



HAYWARD®



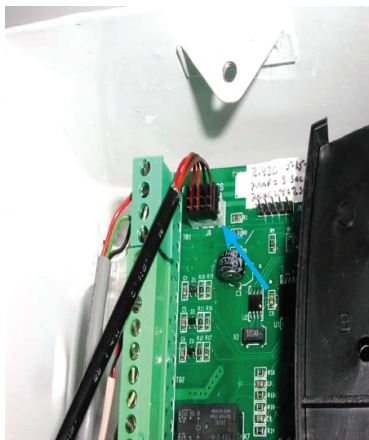
STEP 5: Plug the hole with the pvc plug provided in the kit.



STEP 6: Insert the connector end of the 50 ft. extension cable into the bottom of the Pro Logic.



STEP 7: Feed the extension cable through the Pro Logic.



STEP 8: Plug the extension cable into the spot marked "Wireless Antenna".



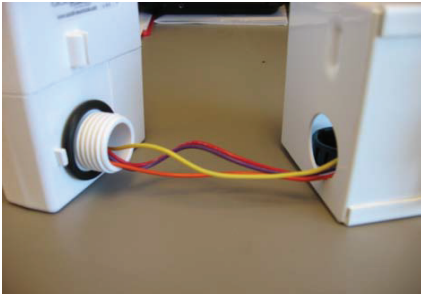
HAYWARD®



STEP 9 : Insert the Cable Bushing into the bottom of the bracket as shown.



STEP 10: Cable Bushing should be flush to the bracket.



STEP 11: Attach the base station to the bracket as shown.



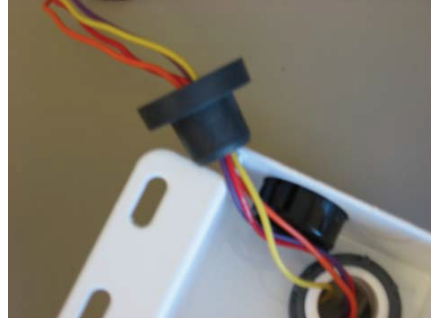
STEP 12: Attach locking nut to base and tighten.



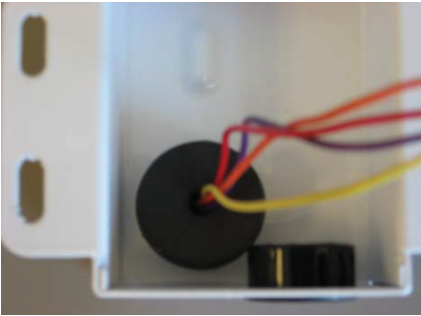
HAYWARD®



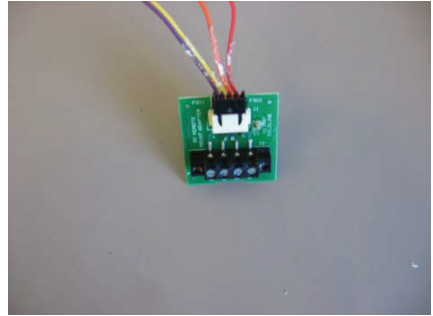
STEP 13: Add rubber plug to base station cable.



STEP 14: Push rubber plug into cable opening on base station.



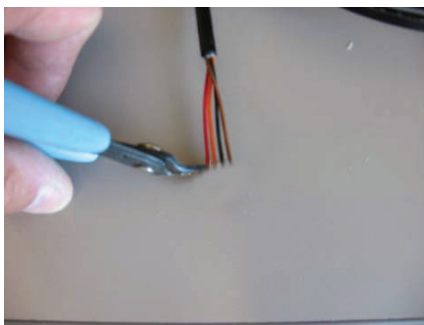
STEP 15: Plug flush to cable opening.



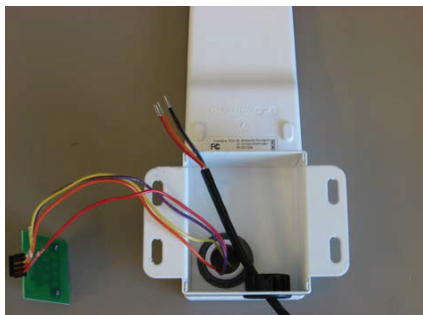
STEP 16: Attach communication cable to circuit board as shown.



HAYWARD®



STEP 17: At the other end of the extension cable, cut and strip wires.



STEP 18: Pull cable through the bushing.



STEP 19: Attach extension cable to circuit board, as per color code of wire and circuit board.



STEP 20: Slide the PCB between locking nut of base station and rubber grommet.

Temporarily install the remote assembly in an area which will provide the best wireless communication and minimal interference with surrounding objects. Attach to side of house, on a pole or other suitable mounting surface. The antenna must be vertically oriented. With all wiring complete, re-install the dead front panel and power up the Pro Logic.

Test antenna location by sending commands from your remote control. If wireless control does not work in the test location, try relocating the remote assembly and test again. When a suitable mounting location is found, permanently fasten the remote assembly to the mounting surface.

For further information or consumer
technical support, visit our website at
www.hayward.com



HAYWARD®



Hayward is a registered trademark of Hayward Industries, Inc. © 2017 Hayward Industries, Inc.

All other trademarks not owned by Hayward are the property of their respective owners.
Hayward is not in any way affiliated with or endorsed by those third parties.

USE ONLY HAYWARD GENUINE REPLACEMENT PARTS