



Transformer Kit

(For Models GLX-XFMR & GLX-XFMR-E)

Background:

The GLX-XFMR and GLX-XFMR-E are replacement transformer kits designed to replace the original transformer in your Aqua Rite, Aqua Trol, Aqua Logic, Aqua Plus or Pro Logic unit. To replace your transformer, follow the replacement procedure below. Please verify that the replacement transformer matches the original transformer.

Kit Contains:

- 1 Transformer
- 4 #10-32 x .31" Tri-lobe Screws

WARNING: Disconnect all AC power at the main breaker before attempting to replace the transformer. Use a voltmeter to verify that the main supply input has been removed. Use appropriate energy lock-out procedures to be certain nobody restores power during the following procedure.

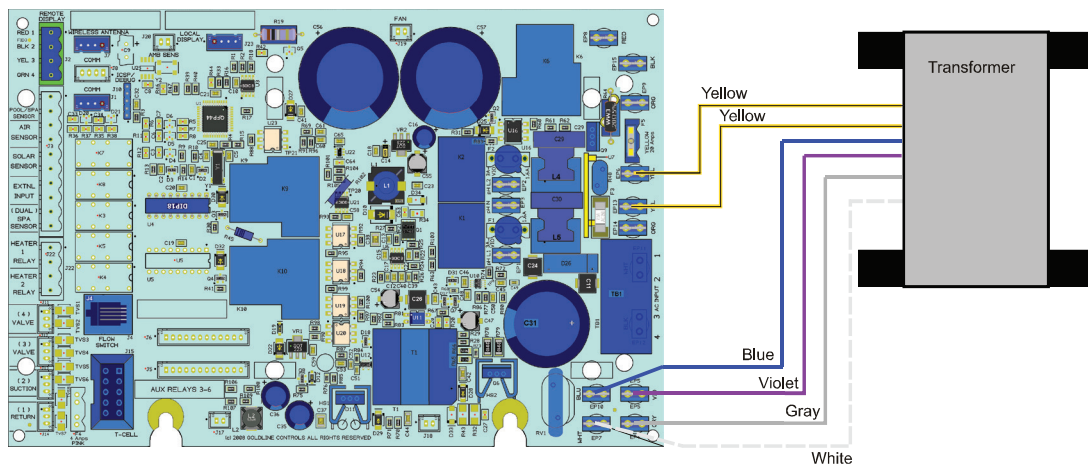
Procedure:

1. Remove front panel from control unit using a 5/16 nut driver or flat head screwdriver. Remove transformer wires carefully from circuit board. The Colors are: Blue, Violet, Gray, White and two Yellow wires. Pull from the wire connector, not the wire itself.
2. Hold the transformer while removing four screws using 5/16 nut driver or flat head screwdriver. **Caution: Transformer is heavy!**
3. Install the new transformer at the same location using the four screws supplied. Do not over tighten.
4. Wire the transformer per the diagram on the next page for the control unit that you have. Be sure each connector is fully seated. A firm tug on each wire should prove all connectors are tight. Before applying power, make sure all wires are in the correct position.

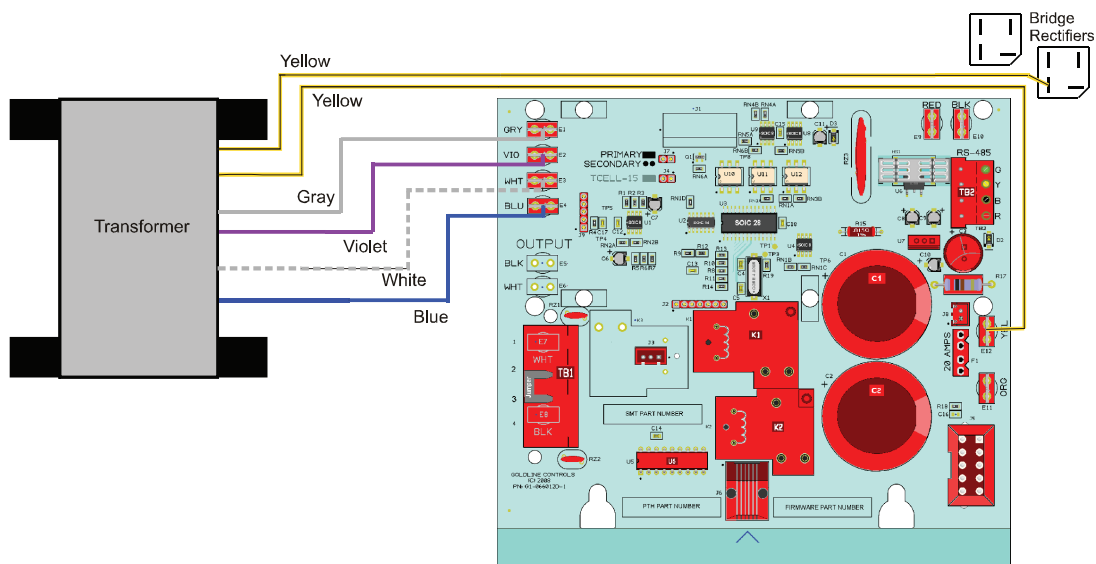
Hayward Industries
400 Connell Drive, Suite 6100
Berkeley Heights, NJ 07922
Phone: (908) 355-7995
www.hayward.com



Pro Logic & Aqua Rite Pro



Aqua Rite & Aqua Trol



Aqua Logic & Some Early Pro Logics

