

**HAYWARD®**

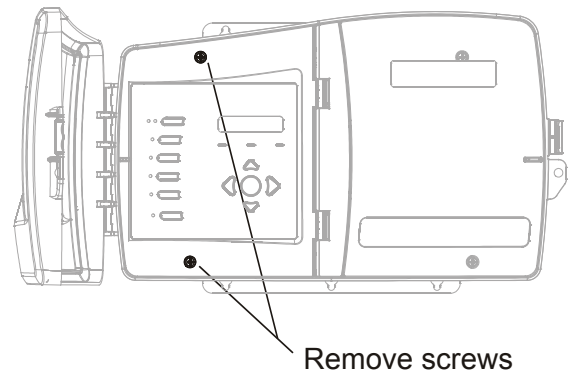
# GLX-LOC-ONCOM

(Replacement Instructions)

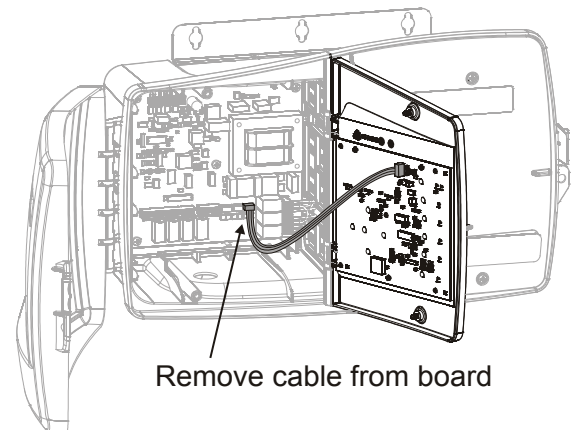
**WARNING:** Before attempting to install the replacement GLX-LOC-ONCOM, remove input power to the On-Command.

The GLX-LOC-ONCOM is an assembly containing the plastic panel as well as the local display printed circuit board (PCB). To install the GLX-LOC-ONCOM, the old panel and PCB must be removed. For removal, follow the instructions below.

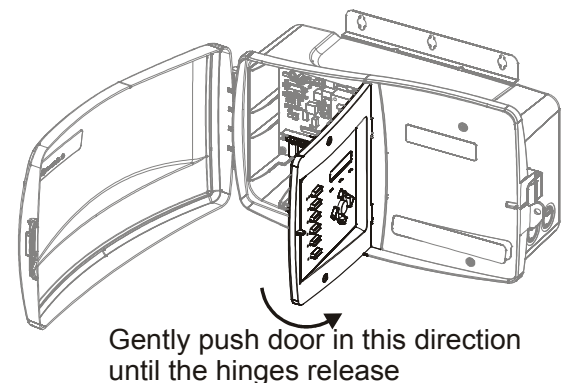
- 1) Open door and remove the 2 screws holding the panel in place.



- 2) Swing panel open and disconnect the four conductor cable from the main PCB.



- 3) Continue to swing panel open until pressure is felt on the hinges. Gently continue to push until the panel releases from the hinges. Remove panel.



- 4) Reverse steps 1-3 to install the new GLX-LOC-ONCOM.

Hayward Industries  
400 Connell Drive, Suite 6100  
Berkeley Heights, NJ 07922  
Phone: (908) 355-7995  
[www.hayward.com](http://www.hayward.com)