



# GLX-HYDXFMR

## Replacement Transformer

### Step 1

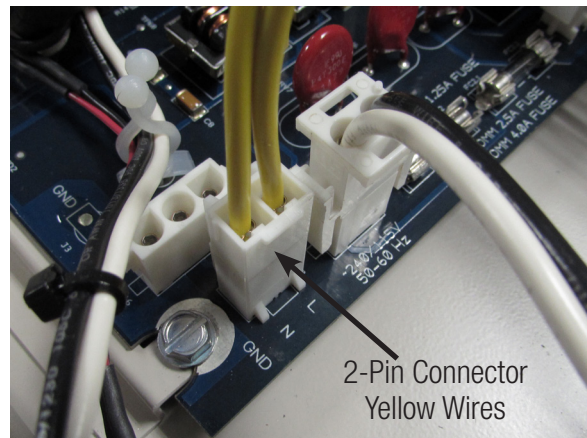
**IMPORTANT:** To Prevent Electrical Shock, Make Sure All Power Sources Are Disconnected From The Unit Before Starting!

Remove Front Panel by removing the two screws using a 5/16 nut driver.



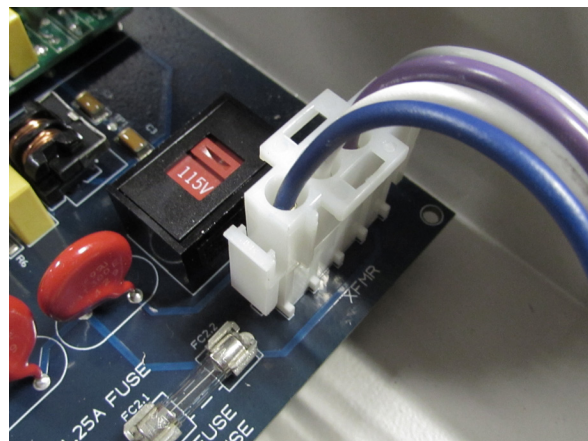
### Step 2

Disconnect the 2-pin connector with the yellow wires from the main board.



### Step 3.

Disconnect the 4-pin connector with the blue, white, purple, and gray wires from the main board.





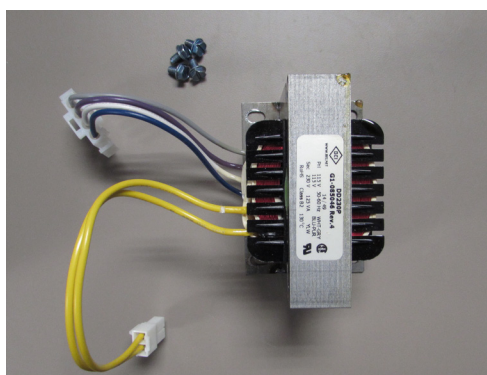
### **Step 4.**

Remove the 4 screws that secure the transformer to the can using a 5/16 nut driver.



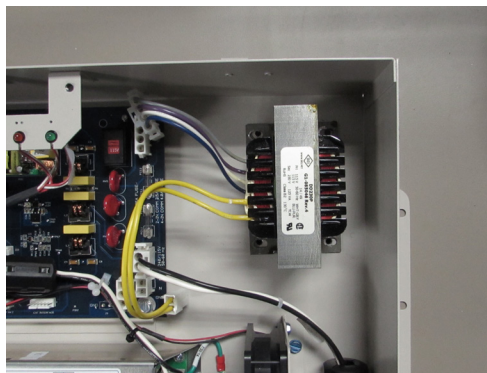
### **Step 5.**

Remove the old transformer from the can.



### **Step 6.**

Unbox the GLX-HYDXFMR replacement transformer and place it in the can where the old transformer used to be.



### **Step 7.**

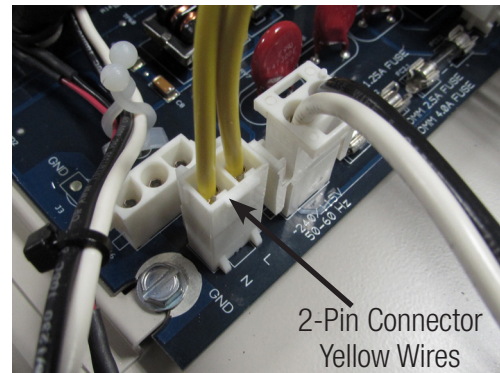
Screw down the GLX-HYDXFMR using the 4 screws provided and a 5/16 nut driver.





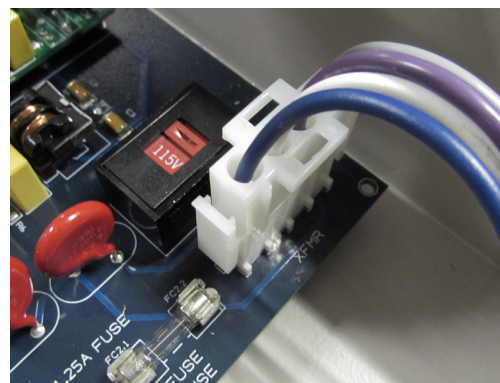
### **Step 8.**

Connect the 2-pin connector with the yellow wires as shown.



### **Step 9.**

Connect the 4-pin connector with the blue, white, purple, and gray wires as shown.



### **Step 10.**

Replace the front panel using the two screws that were previously removed using a 5/16 nut driver.



### **Step 11.**

Installation is now complete. It is now safe to restore power to the system.



Hayward Pool Products  
620 Division Street, Elizabeth NJ 07207  
Phone (908)-355-7995  
**[www.hayward.com](http://www.hayward.com)**