



HAYWARD®

092704 RevA

VS Omni

Replacement LCD Display for VS Omni Control Pad

Owner's Manual

Contents

Description.....1

Installation.....1

HLXDLCD

Hayward Pool Products
620 Division Street, Elizabeth NJ 07207
Phone (908)-355-7995
www.hayward.com



HAYWARD®

Description

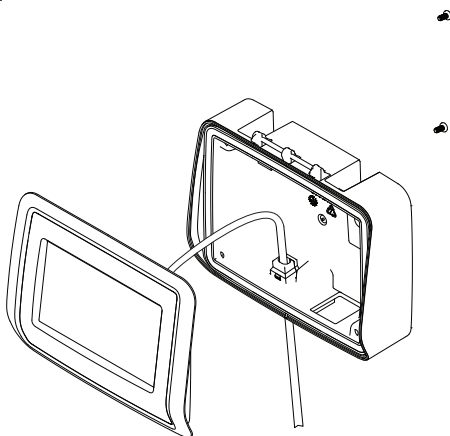
The HLXDLCD is a replacement LCD display for the VS Omni Control Pad. Before attempting to replace the display, completely disconnect power to the VS Omni.

Installation

Disassemble Control Pad

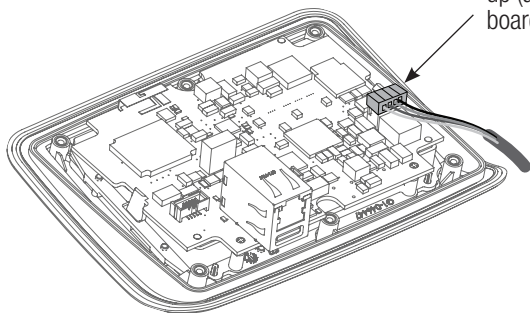
With power off at the VS Omni, remove the Control Pad from the mounting surface by gently lifting up and pulling. Follow steps below:

1. Remove the 4 screws from the back of the Control Pad and separate front face from rear housing as shown.



Remove 4 screws and separate the face from the Control Pad housing.

2. Disconnect RS485 cable from the printed circuit board (PCB).

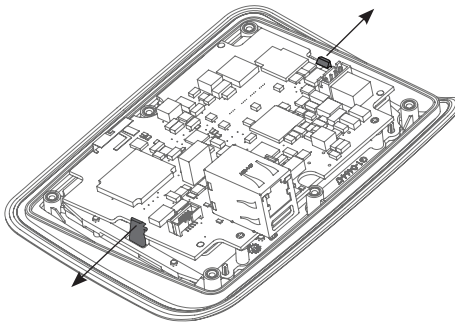


Pull cable connector straight up (away) from the circuit board to disconnect.



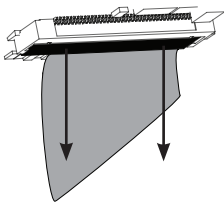
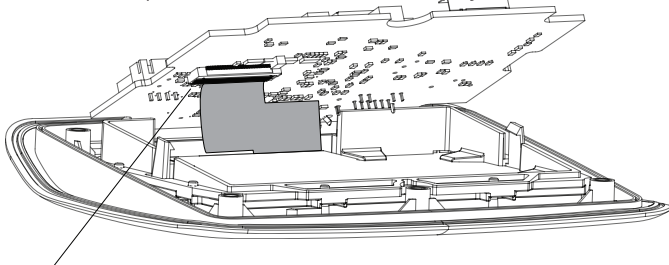
HAYWARD®

3. Remove PCB gently as shown. Note that after the circuit board is unfastened from the clips, it will still be retained to the display by a flat ribbon cable.



Flex retaining clips outward and gently pull up on the circuit board.

4. Gently swivel the circuit board away from the display to view the ribbon cable connector. Release the ribbon cable and separate the PCB from the old display.



Use a fingernail or suitable tool to unlock the lever (shown in black). Gently pull the lever open in the direction of the arrows shown. When the lever unlocks, the ribbon cable will slide out of the connector.

5. Now that the old display has been removed, position the ribbon cable from the HLXDLCD into the connector on the PCB in the same manner as the old. Take your time and don't lock the lever onto the ribbon cable until you're certain it is positioned properly. Once the cable is in the correct position, lock the lever down on the cable to secure.
6. Reverse previous steps to finish the installation.



HAYWARD®

For further information or consumer
technical support, visit our website at
www.hayward.com



HAYWARD®



Hayward is a registered trademark and VS Omni is
a trademark of Hayward Industries, Inc. © 2017 Hayward Industries, Inc.

All other trademarks not owned by Hayward are the property of their respective owners.
Hayward is not in any way affiliated with or endorsed by those third parties.

USE ONLY HAYWARD GENUINE REPLACEMENT PARTS