



HAYWARD®

092705 RevA

VS Omni

Replacement Rear Housing for VS Omni Control Pad

Owner's Manual

Contents

Description.....1

Installation.....1

HLXDSPCASE

Hayward Pool Products
620 Division Street, Elizabeth NJ 07207
Phone (908)-355-7995
www.hayward.com



HAYWARD®

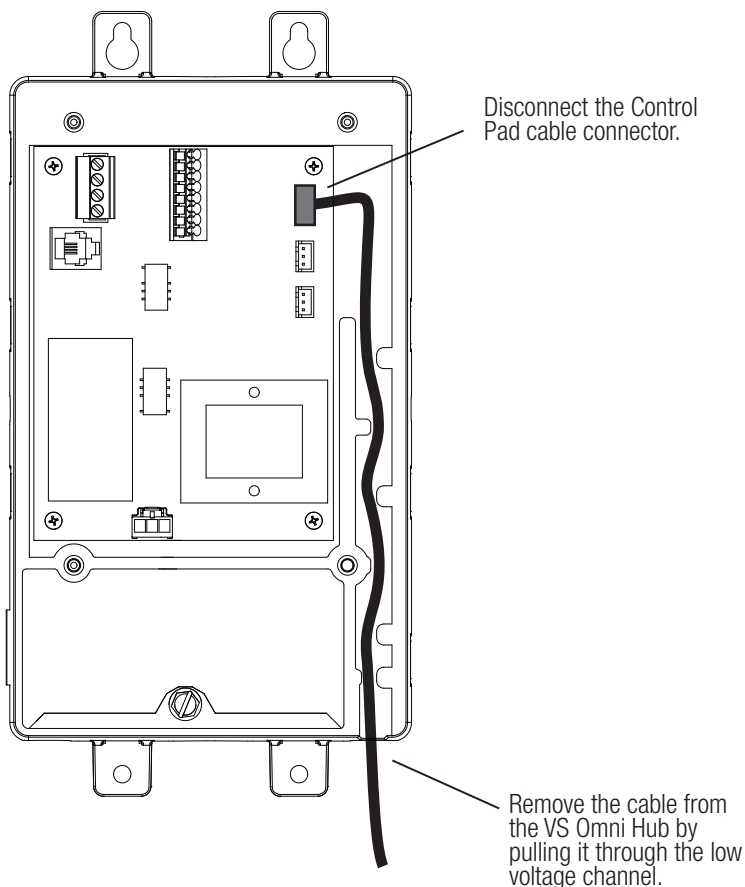
Description

The HLXDSPCASE is a replacement rear housing for the VS Omni Control Pad. Before attempting to replace the housing, completely disconnect power to the VS Omni.

Installation

Disconnect Control Pad from VS Omni Hub

With power removed from the VS Omni, disconnect the Control Pad connector at the VS Omni Hub. Pull the cable through the low voltage channel to completely remove it from the Hub.

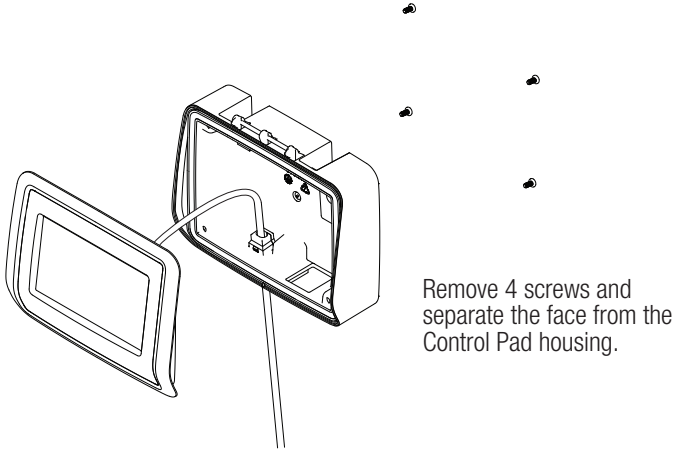




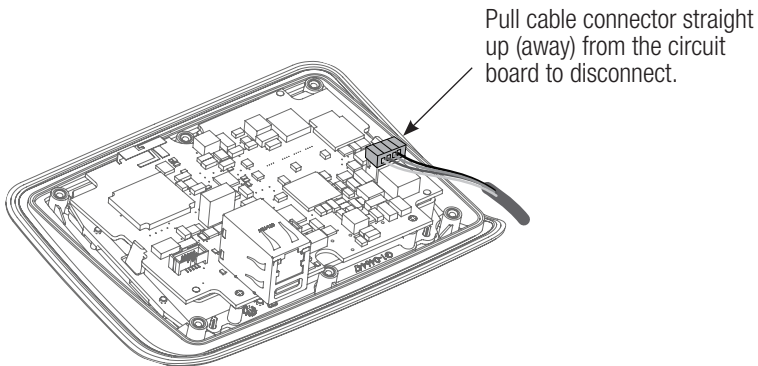
HAYWARD®

Install HLXSPCASE

1. Remove the Control Pad from the mounting surface by gently lifting up and pulling.
2. Remove the 4 screws from the back of the Control Pad and separate the front face from the rear housing as shown.



3. Disconnect RS485 cable from the printed circuit board (PCB) and discard the old housing.



4. Connect the RS485 cable from the new HLXDSPCASE housing to the PCB on the front face. Make sure the gasket is properly seated in the HLXDSPCASE, then fasten the face to the housing using the 4 screws, reversing Step 1.
5. Reinstall the Control Pad to the original location.
6. Route the Control Pad cable through the low voltage channel at the VS Omni Hub and plug in the connector, reversing the procedure on page 1.
7. Power up the VS Omni and make sure all equipment is working properly.



HAYWARD®

For further information or consumer
technical support, visit our website at
www.hayward.com



HAYWARD®



Hayward is a registered trademark and VS Omni is
a trademark of Hayward Industries, Inc. © 2017 Hayward Industries, Inc.

All other trademarks not owned by Hayward are the property of their respective owners.
Hayward is not in any way affiliated with or endorsed by those third parties.

USE ONLY HAYWARD GENUINE REPLACEMENT PARTS